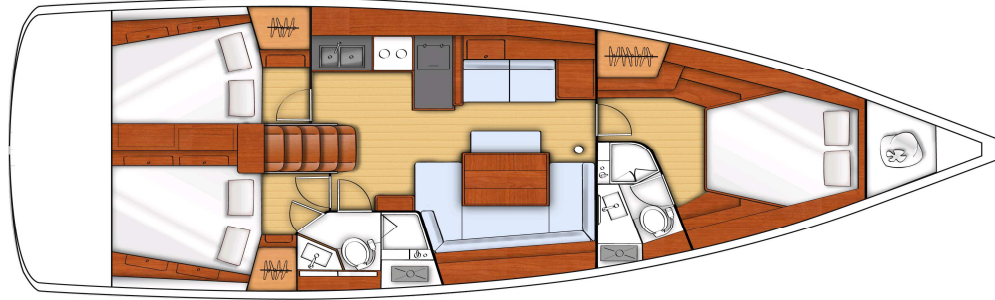


DREAM CHASER
Beneteau Oceanis 45
2014

Tekne Adı / Boat Name / Name des Boots
Model / Fabrikat
Yıl / Year / Jahr



Teknik Özellikler:

Tam Boy	13.85 m
En	4.49 m
Su Çekimi	2.15 m
Ağırlık (boş)	9.55 ton
Su	570 lt
Mazot	200 lt
Yelken Alanı	100 m ²
Sarma Ana Yelken	
Sarma Cenova	
Asimetrik balon yelken kullanılabilir (ekstra)	
Motor	Yanmar 54 hp
Kamara	3 + Salon
Yatak	6 + 2
WC / Banyo	2

Çelik mavisi gövde rengi

Uzaktan kumandalı açılır yüzme platformu

2 Dömen simidi

Katlanır pervane

Baş manevra pervanesi

3 x Elektrikli vinç

Tik havuzluk ve güverte

2 x Elektrikli marin tuvalet

180 W Inverter (12V DC - 220V AC)

3 x Elektrikli buzdolabı

220 V mikrodalgı fırın

Fusion Radio, USB, Bluetooth

B&G Zeus T12 haritalı GPS, dümende

2 x B&G Zeus T7 gösterge

(Hız, Derinlik, Rüzgar)

B&G Zeus T7 otopilot + uzaktan kumanda

B&G RS35 VHF Telsiz + AIS

Ultra çapa, 27 kg

Ultra fırdöndü, bosa kancası

80 m x 10 mm zincir

Quick 1000 W ırgat

Zincir sayacı (dümende)

60 m. Ultraline makaralı yüzen yassı halat

2.50 m. yumuşak tabanlı şişme bot

Mercury 3.5hp, 4 zamanlı motor

Bimini güneşlik

Serpinti körüğü

Havuzluk minderleri

Pasarella

Yüzme platformu ve duş

Can Salı (8 kişilik)

8 x Otomatik şişme can yeleği

1 x Çocuk can yeleği

Barometre, Termometre

Kılavuz kitaplar

Elektronik ve kağıt haritalar

220 V şarj sistemi

Sıcak su

Opsiyonel Ekstra

Klima, tüm kamaralar ve salonda

*Sahil elektriğine bağlıyken soğutma ve ısıtma

Technical Data:

Overall Length	13.85 m
Beam	4.49 m
Draft	2.15 m
Displacement	9.55 tons
Water	570 lt
Fuel	200 lt
Sail Area	100 m ²
Furling mainsail	
Furling genoa	
Gennaker available (optional extra)	
Engine	Yanmar 54 hp
Cabins	3 + Saloon
Berths	6 + 2
Heads / Showers	2

Steel Blue hull colour

Remote controlled opening swimming platform

2 Steering wheels

Folding propeller

Bow thruster

3 x Electric winches

Teak cockpit & deck

2 x Electrical marine toilets

180 W Inverter (12V DC - 220V AC)

3 x Electric fridges

220 V microwave oven

Fusion Radio, USB, Bluetooth

B&G Zeus T12 chartplotter, at the cockpit

2 x B&G Zeus T7 gösterge

(Speed, Depth, Wind)

B&G Zeus T7 autopilot interface + remote

B&G RS35 VHF Radio + AIS

Ultra anchor, 27 kg

Ultra flip swivel, chain grab

80 m x 10 mm chain

Quick 1000 W windlass

Chain counter (at the cockpit)

60 m. Ultraline floating flat line and reel

2.50 m. soft bottom dinghy

Mercury 3.5hp, 4 stroke outboard

Biminitop

Sprayhood

Cockpit cushions

Gangway

Swimming platform with shower

Life raft (8 person)

8 x Automatic inflatable life jackets

1 x Child life jacket

Barometer, Thermometer

Pilot books

Electronic and paper charts

220 V recharging system

Hot Water

Available as an Optional Extra

Air conditioning in all cabins & saloon

*Cooling or heating when connected to shore power

Technische Daten:

Länge über alles	13.85 m
Breite	4.49 m
Tiefgang	2.15 m
Verdrängung	9.55 tonnen
Wassertank	570 L
Dieseltank	200 L
Segelfläche	100 m ²
Grosssegel-Rollreffanlage	
Genua-Rollreffanlage	
Gennaker verfügbar (Optionale Extra)	
Motor	Yanmar 54 PS
Kabinen	3 + Saloon
Kojen	6 + 2
WC und Dusche	2

Stahlblaue Rumpffarbe

Badeplattform mit Fernbedienung zum Öffnen

2 Steuerrad

Faltbare Propeller

Bugstrahlruder

3 x elektrische Seilwischen

Teak Cockpit und Deck

2 x Elektrische Marine-WC

180 W Wechselrichter

3 x elektr. Kuehlaggregat

220 V Mikrowelle Backofen

Fusion Radio, USB, Bluetooth

B&G Zeus T12 Kartenplotter, im Cockpit

2 x B&G Zeus T7 Anzeige

(Geschwindigkeit, Tiefe, Wind)

B&G Zeus T7 Autopilot Interface + Fernbedienung

B&G RS35 VHF Radio + AIS

Ultra-Anker, 27 kg

Ultra-Schwenker, Kettenhaken

80 m x 10 mm Kette

Quick 1000 W Ankerwinde

Kettenzähler (im cockpit)

60 m. Ultraline flacher schwimmleine und rolle

2.50 m. weichen Boden Beiboot

Mercury 3.5PS, 4-Takt-Außenbord

Biminitop

Sprayhood

Cockpitkissen

Gangway

Badeplattform mit Dusche

Rettungsinsel (8 Person)

8 x Auto. aufblasbare Schwimmweste

1 x Kinder-Schwimmweste

Barometer, Thermometer

Pilot Bücher

Elektronische und Papierkarten

Batterieladegeraet

Warmwasser

Extra-Optionen

Klimaanlage in allen Kabinen & Salon

*Kühlung bzw.Heizung beim elektrischen Landanschluss